

PHOTO LOG

**APPLICATION “APP. 2833” – 509 PARK STREET (509 PARK STREET LLC)
SUBDIVISION OF BLOCK 2710, LOT 29**

**509 PARK STREET
BLOCK 2710 - LOTS 29
TOWNSHIP OF MONTCLAIR
ESSEX COUNTY, NEW JERSEY**

**PREPARED FOR:
TOWNSHIP OF MONTCLAIR**

**PREPARED BY:
PETRY ENGINEERING, LLC
155 PASSAIC AVENUE
SUITE 350
FAIRFIELD, NEW JERSEY 07004
973-227-7004**





Photo#1 – Front façade of 509 Park Street in Montclair, New Jersey.



Photo#2 – Porch at rear of main dwelling at 509 Park Street in Montclair, New Jersey.





Photo#3 – Side entrance to 509 Park Street in Montclair, New Jersey.



Photo#4 – Rear of 509 Park Street in Montclair, New Jersey from the lower lawn.





Photo#5 – Rear façade of 509 Park Street, Montclair New Jersey.



Photo#6 – Pool in rear yard of 509 Park Street, Montclair New Jersey.





Photo#7 – Front gate as viewed from the entrance to 509 Park Street, Montclair, New Jersey.



Photo#8 – Detached garage in rear corner of 509 Park Street, Montclair, New Jersey.





Photo#9 – View of pool and detached garage in rear of 509 Park Street, Montclair, New Jersey.



Photo#10 – Detached garage as viewed from attached garage at 509 Park Street, Montclair, New Jersey.



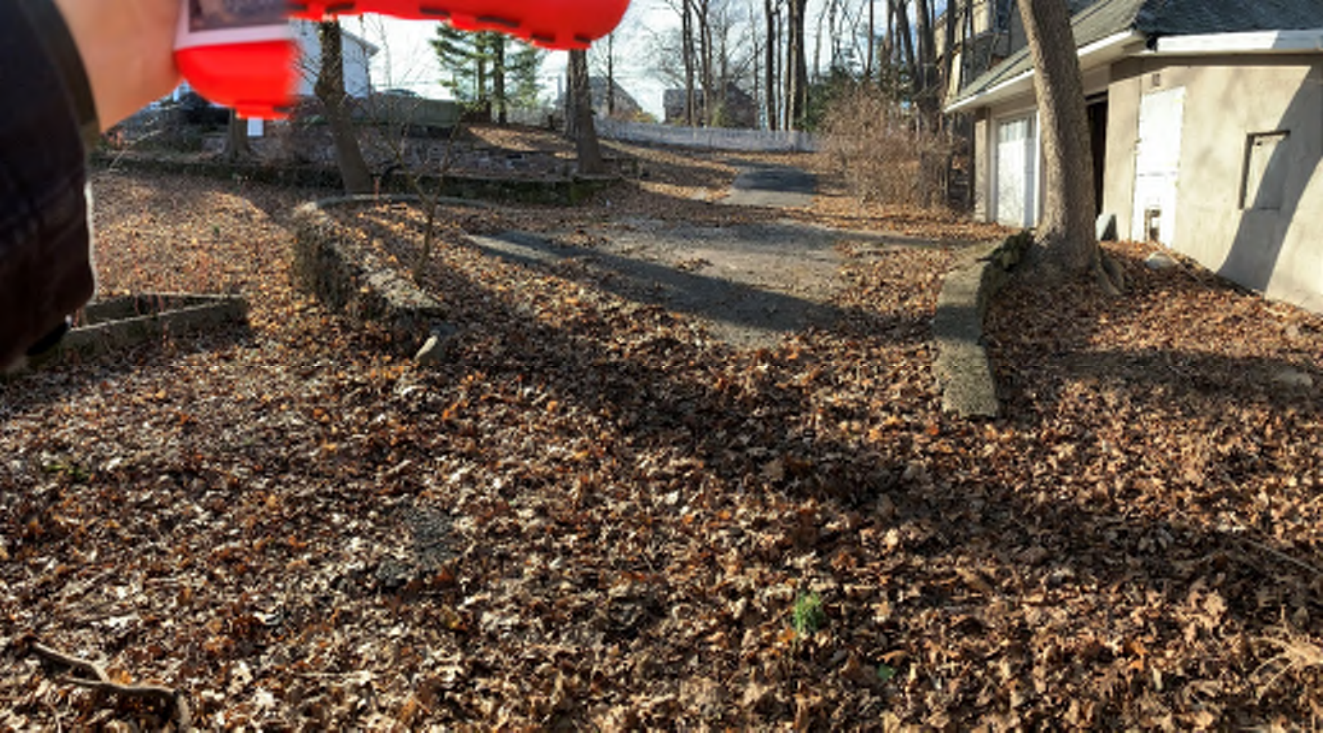


Photo#11 – View of gate and stone wall along street right-of-way ling of 509 Park Street, Montclair, New



Photo#12 – Garden area on proposed lot 29.03 at 509 Park Street, Montclair, New Jersey.





Photo#13 – View of proposed lot 29.01 looking towards Park Street rear corner of lot near detached garage.



Photo#14 – Landscape feature found near rear of proposed lot 29.03 at 509 Park Street

