

BANK OF AMERICA
Lighting Upgrades
Montclair, New Jersey

NJ6-280
 560 Valley Road
 Montclair Township
 Essex County, New Jersey



Rutherford, NJ · New York, NY · Boston, MA
 Princeton, NJ · Tampa, FL · Detroit, MI
 www.stonefieldeng.com

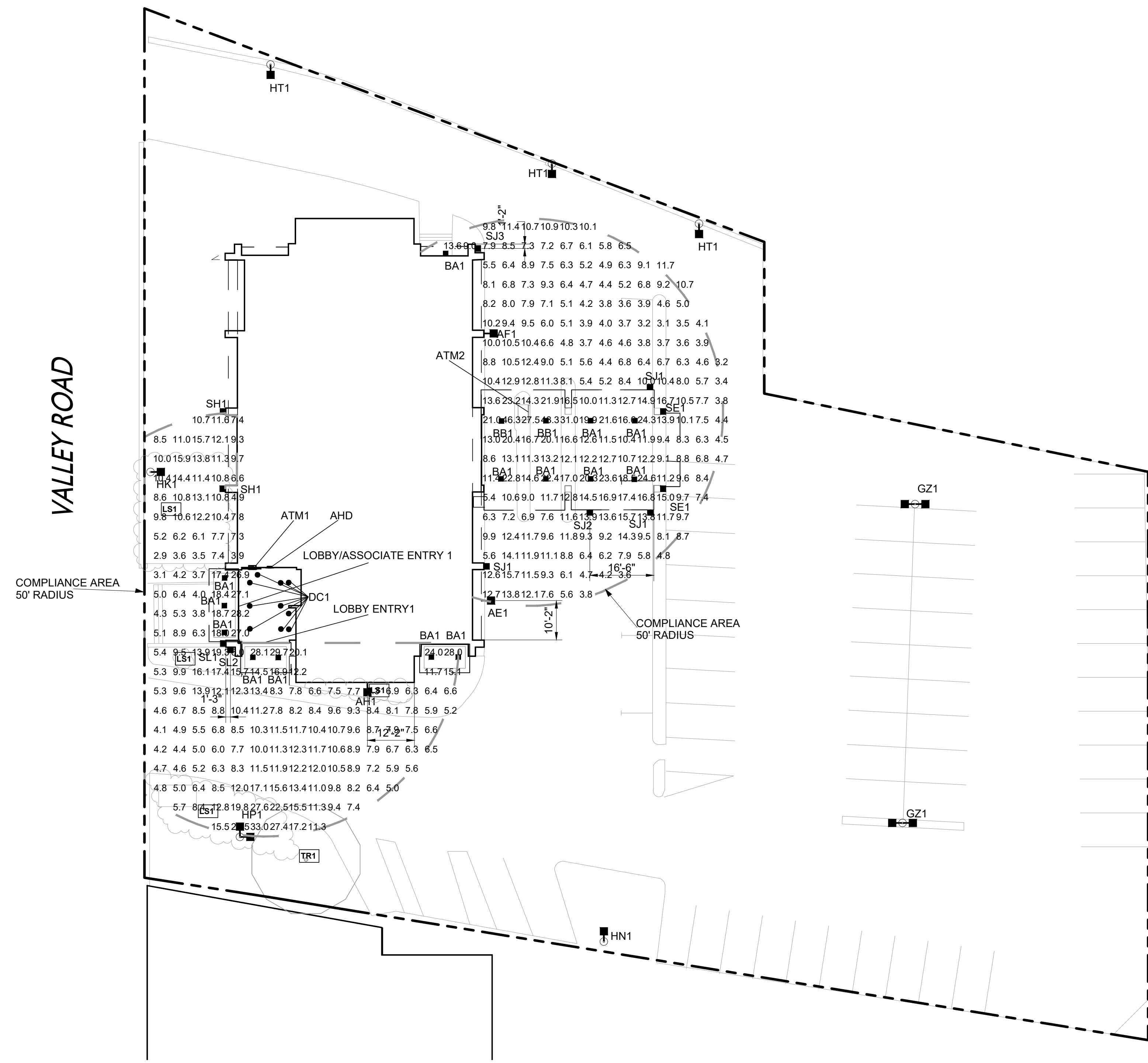
Headquarters: 92 Park Avenue, Rutherford, NJ 07070
 Phone 201.340.4468 · Fax 201.340.4472



Facility Data and Design. Optimized.

P.O. Box 645, Rockwall, Texas 75087
 www.gmr1.com
 Office: (972) 771-6038 FAX: (972) 722-2762

Issue	Date	Issue Description	By	Check
01	03/09/2023	PER GMR V1	TP	JR



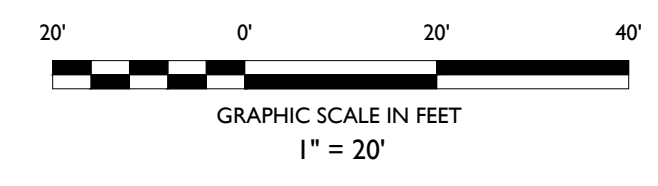
LIGHTING PLAN 50' @ 36"

SEE FIXTURE CLARIFICATION NOTE #9		LUMINAIRE SCHEDULE		**CONTRACTOR TO VERIFY MOUNTING ACCESSORIES BEFORE ORDERING**									
SYMBOL	TOTAL FIXTURE COUNT	TYPE	NEW POLE COUNT	MANUFACTURER	MODEL	MODEL NUMBER	NOTES	MOUNTING HEIGHT	MOUNTING ACCESSORY	BUG RATING	MOUNTING	KILOWATT PER HOUR	TOTAL WATTAGE
■	1	AE1	-	CREE	AREA EDGE	ARE-EDG-4M-DA-06-E-UL-BZ-700-40K	ADD NEW FIXTURE	15' AFG	WM-DM-BZ	B3-U0-G2	WALL MOUNT	0.134	134 W
■	1	AF1	-	CREE	AREA EDGE	ARE-EDG-4M-DA-08-E-UL-BZ-525-40K	REPLACE EXISTING FIXTURE	MATCH EXISTING	-	B3-U0-G2	POLE MOUNT	0.133	133 W
■	1	AH1	-	CREE	AREA EDGE	ARE-EDG-4M-DA-12-E-UL-BZ-525-40K	ADD NEW FIXTURE	22' AFG	WM-DM-BZ	B3-U0-G3	WALL MOUNT	0.202	202 W
■	14	BA1	-	CREE	CPY	CPY250-C-2L-40K7-F-UL-DM-BZ	REPLACE EXISTING FIXTURE	MATCH EXISTING CANOPY HEIGHT	-	B1-U0-G0	SURFACE CANOPY MOUNT	0.014	196 W
■	2	BB1	-	CREE	CPY	CPY250-C-4L-40K7-F-UL-DM-BZ	REPLACE EXISTING FIXTURE	MATCH EXISTING CANOPY HEIGHT	-	B2-U0-G1	SURFACE CANOPY MOUNT	0.031	62 W
●	10	DC1	-	CREE	CDR	CDR-8-ALS(2500L)-9ACK(40K)-10VS-WH-UNV	REPLACE EXISTING FIXTURE	MATCH EXISTING CANOPY HEIGHT	-	B1-U2-G0	RECESSED CANOPY MOUNT	0.029	290 W
■	4	GZ1	-	CREE	OSQ	OSQ-L-B-30L-40K7-5N-UL-NM-BZ	REPLACE EXISTING FIXTURE	MATCH EXISTING	OSQ-ML-B-DA-BZ	B5-U0-G4	POLE MOUNT	0.202	808 W
■	1	HN1	-	CREE	OSQ	OSQ-M-B-16L-40K7-4M-UL-NM-BZ	REPLACE EXISTING FIXTURE	MATCH EXISTING	OSQ-ML-B-DA-BZ, OSQ-BLSMF	B1-U0-G2	POLE MOUNT	0.104	104 W
■	1	HP1	-	CREE	OSQ	OSQ-M-B-11L-40K7-3M-UL-NM-BZ	REPLACE EXISTING FIXTURE	MATCH EXISTING	OSQ-ML-B-DA-BZ	B2-U0-G2	POLE MOUNT	0.072	72 W
■	2	HT1	-	CREE	OSQ	OSQ-M-B-16L-40K7-3M-UL-NM-BZ	REPLACE EXISTING FIXTURE	MATCH EXISTING	OSQ-ML-B-DA-BZ	B3-U0-G3	POLE MOUNT	0.104	208 W
■	3	HT1	-	CREE	OSQ	OSQ-M-B-16L-40K7-3M-UL-NM-BZ	REPLACE EXISTING FIXTURE	MATCH EXISTING	OSQ-ML-B-DA-BZ, OSQ-BLSMF	B2-U0-G2	POLE MOUNT	0.104	312 W
■	2	SE1	-	CREE	SECURITY EDGE	SEC-EDG-3M-WM-02-E-UL-BZ-350-40K	REPLACE EXISTING FIXTURE	MATCH EXISTING	-	B1-U0-G1	WALL MOUNT	0.025	50 W
■	2	SH1	-	CREE	SECURITY EDGE	SEC-EDG-4M-WM-02-E-UL-BZ-350-40K	REPLACE EXISTING FIXTURE	MATCH EXISTING	-	B1-U0-G1	WALL MOUNT	0.025	50 W
■	3	SJ1	-	CREE	SECURITY EDGE	SEC-EDG-4M-WM-02-E-UL-BZ-700-40K	REPLACE EXISTING FIXTURE	MATCH EXISTING	-	B1-U0-G1	WALL MOUNT	0.05	150 W
■	1	SJ2	-	CREE	SECURITY EDGE	SEC-EDG-4M-WM-02-E-UL-BZ-700-40K	ADD NEW FIXTURE	9-9" AFG	-	B1-U0-G1	WALL MOUNT	0.05	50 W
■	1	SJ3	-	CREE	SECURITY EDGE	SEC-EDG-4M-WM-02-E-UL-BZ-700-40K	ADD NEW FIXTURE	10-9" AFG	-	B1-U0-G1	WALL MOUNT	0.05	50 W
■	1	SL1	-	CREE	SECURITY EDGE	SEC-EDG-4M-WM-04-E-UL-BZ-700-40K	REPLACE EXISTING FIXTURE	MATCH EXISTING	-	B2-U0-G2	WALL MOUNT	0.093	93 W
■	1	SL2	-	CREE	SECURITY EDGE	SEC-EDG-4M-WM-04-E-UL-BZ-700-40K	ADD NEW FIXTURE	14-9" AFG	-	B2-U0-G2	WALL MOUNT	0.093	93 W
GRAND TOTAL WATTAGE												3057 W	

CALCULATION SUMMARY COMPLIANCE					
Calculation Points Name	Average	Maximum	Minimum	Ave/Min	Max/Min
ALL UNITS 50' @ 36"	10.4 fc	46.3 fc	2.9 fc	3.5	15.8

TOTAL FIXTURE COUNT	TYPE	NOTES	MOUNTING HEIGHT
1	AE1	ADD NEW FIXTURE	15' AFG
1	AF1	REPLACE EXISTING FIXTURE	MATCH EXISTING
1	AH1	ADD NEW FIXTURE	22' AFG
14	BA1	REPLACE EXISTING FIXTURE	MATCH EXISTING CANOPY HEIGHT
2	BB1	REPLACE EXISTING FIXTURE	MATCH EXISTING CANOPY HEIGHT
10	DC1	REPLACE EXISTING FIXTURE	MATCH EXISTING CANOPY HEIGHT
4	GZ1	REPLACE EXISTING FIXTURE	MATCH EXISTING
1	HN1	REPLACE EXISTING FIXTURE	MATCH EXISTING
1	HP1	REPLACE EXISTING FIXTURE	MATCH EXISTING
3	HT1	REPLACE EXISTING FIXTURE	MATCH EXISTING
2	SE1	REPLACE EXISTING FIXTURE	MATCH EXISTING
2	SH1	REPLACE EXISTING FIXTURE	MATCH EXISTING
3	SJ1	REPLACE EXISTING FIXTURE	MATCH EXISTING
1	SJ2	ADD NEW FIXTURE	9-9" AFG
1	SJ3	ADD NEW FIXTURE	10-9" AFG
1	SL1	REPLACE EXISTING FIXTURE	MATCH EXISTING
1	SL2	ADD NEW FIXTURE	14-9" AFG

NOTES:
 1. THE SCOPE OF WORK FOR THIS PROJECT IS LIMITED TO EXTERIOR LIGHTING RENOVATIONS AS SHOWN ON THE PLANS.
 2. ALL PROPOSED LIGHTS WILL BE FULL CUTOFF LED LIGHT FIXTURES.
 3. ALL EXISTING LIGHTS WILL BE REPLACED WITH FULL CUT OFF LED LIGHT FIXTURES.
 4. REFERENCE THE LUMINAIRE SCHEDULE (SHEET LU-2) FOR ADDITIONAL LIGHT FIXTURE INFORMATION.



JAKE MODESTOW, P.E.
 NEW JERSEY LICENSE No. 56119
 LICENSED PROFESSIONAL ENGINEER

TP
 DRAWN BY
 JR
 CHECKED BY



SCALE: (H) 1" = 20'

PROJECT ID: RUT-220516

TITLE:

SECURITY LIGHTING PLAN

SHEET:

C4

EXHIBIT 1000 AUTOMATICALLY GENERATED - 560 VALLEY ROAD UPPER MONTCLAIR, NEW JERSEY 07042-1000

Cree Edge™ Series LED Canopy Luminaire

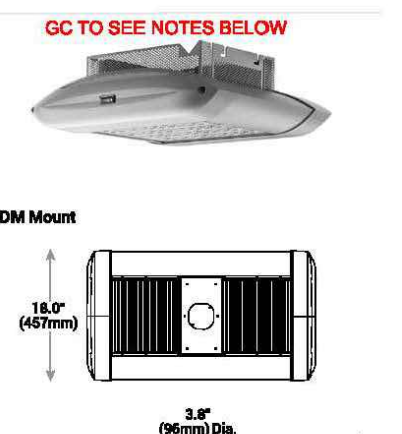
CAN-EDG-5M-DM-04-E-U-XX-350-40K
TYPE BB

Product Description
The Cree Edge™ Series LED Canopy Luminaire provides a slim, low profile solution for easily mounting below the canopy edge. Built with rugged cast aluminum, integral weightlight LED driver compartment and high performance heat sink specifically designed for LED applications, this luminaire is available with direct, pendant or angled mounting (details on page 2). The luminaire with 0-10V dimming is required when mounting to solid surfaces. Includes sealable diffuser guard.
Applications: Parking lots, walkways, campuses, car dealerships, office complexes, and internal roadways.

Performance Summary
Patented NanoQSP Product Technology
Made in the U.S.A. of U.S. and imported parts
CRI: Minimum 70 CRI
CCT: 4000K (4-300K, 4700K (4-500K) standard
Limited Warranty: 10 years on luminaire/10 years on Colorfast DeltaGuard™ finish

Accessories

Field-installed	Head Mount Brackets
OSQ-BLSMF	OSQ-BLSMF
OSQ-BLSMF-PT	OSQ-BLSMF-PT
OSQ-BLSMF-PT-2	OSQ-BLSMF-PT-2
OSQ-BLSMF-PT-3	OSQ-BLSMF-PT-3
OSQ-BLSMF-PT-4	OSQ-BLSMF-PT-4
OSQ-BLSMF-PT-5	OSQ-BLSMF-PT-5
OSQ-BLSMF-PT-6	OSQ-BLSMF-PT-6
OSQ-BLSMF-PT-7	OSQ-BLSMF-PT-7
OSQ-BLSMF-PT-8	OSQ-BLSMF-PT-8
OSQ-BLSMF-PT-9	OSQ-BLSMF-PT-9
OSQ-BLSMF-PT-10	OSQ-BLSMF-PT-10
OSQ-BLSMF-PT-11	OSQ-BLSMF-PT-11
OSQ-BLSMF-PT-12	OSQ-BLSMF-PT-12
OSQ-BLSMF-PT-13	OSQ-BLSMF-PT-13
OSQ-BLSMF-PT-14	OSQ-BLSMF-PT-14
OSQ-BLSMF-PT-15	OSQ-BLSMF-PT-15
OSQ-BLSMF-PT-16	OSQ-BLSMF-PT-16
OSQ-BLSMF-PT-17	OSQ-BLSMF-PT-17
OSQ-BLSMF-PT-18	OSQ-BLSMF-PT-18
OSQ-BLSMF-PT-19	OSQ-BLSMF-PT-19
OSQ-BLSMF-PT-20	OSQ-BLSMF-PT-20
OSQ-BLSMF-PT-21	OSQ-BLSMF-PT-21
OSQ-BLSMF-PT-22	OSQ-BLSMF-PT-22
OSQ-BLSMF-PT-23	OSQ-BLSMF-PT-23
OSQ-BLSMF-PT-24	OSQ-BLSMF-PT-24
OSQ-BLSMF-PT-25	OSQ-BLSMF-PT-25
OSQ-BLSMF-PT-26	OSQ-BLSMF-PT-26
OSQ-BLSMF-PT-27	OSQ-BLSMF-PT-27
OSQ-BLSMF-PT-28	OSQ-BLSMF-PT-28
OSQ-BLSMF-PT-29	OSQ-BLSMF-PT-29
OSQ-BLSMF-PT-30	OSQ-BLSMF-PT-30
OSQ-BLSMF-PT-31	OSQ-BLSMF-PT-31
OSQ-BLSMF-PT-32	OSQ-BLSMF-PT-32
OSQ-BLSMF-PT-33	OSQ-BLSMF-PT-33
OSQ-BLSMF-PT-34	OSQ-BLSMF-PT-34
OSQ-BLSMF-PT-35	OSQ-BLSMF-PT-35
OSQ-BLSMF-PT-36	OSQ-BLSMF-PT-36
OSQ-BLSMF-PT-37	OSQ-BLSMF-PT-37
OSQ-BLSMF-PT-38	OSQ-BLSMF-PT-38
OSQ-BLSMF-PT-39	OSQ-BLSMF-PT-39
OSQ-BLSMF-PT-40	OSQ-BLSMF-PT-40
OSQ-BLSMF-PT-41	OSQ-BLSMF-PT-41
OSQ-BLSMF-PT-42	OSQ-BLSMF-PT-42
OSQ-BLSMF-PT-43	OSQ-BLSMF-PT-43
OSQ-BLSMF-PT-44	OSQ-BLSMF-PT-44
OSQ-BLSMF-PT-45	OSQ-BLSMF-PT-45
OSQ-BLSMF-PT-46	OSQ-BLSMF-PT-46
OSQ-BLSMF-PT-47	OSQ-BLSMF-PT-47
OSQ-BLSMF-PT-48	OSQ-BLSMF-PT-48
OSQ-BLSMF-PT-49	OSQ-BLSMF-PT-49
OSQ-BLSMF-PT-50	OSQ-BLSMF-PT-50
OSQ-BLSMF-PT-51	OSQ-BLSMF-PT-51
OSQ-BLSMF-PT-52	OSQ-BLSMF-PT-52
OSQ-BLSMF-PT-53	OSQ-BLSMF-PT-53
OSQ-BLSMF-PT-54	OSQ-BLSMF-PT-54
OSQ-BLSMF-PT-55	OSQ-BLSMF-PT-55
OSQ-BLSMF-PT-56	OSQ-BLSMF-PT-56
OSQ-BLSMF-PT-57	OSQ-BLSMF-PT-57
OSQ-BLSMF-PT-58	OSQ-BLSMF-PT-58
OSQ-BLSMF-PT-59	OSQ-BLSMF-PT-59
OSQ-BLSMF-PT-60	OSQ-BLSMF-PT-60
OSQ-BLSMF-PT-61	OSQ-BLSMF-PT-61
OSQ-BLSMF-PT-62	OSQ-BLSMF-PT-62
OSQ-BLSMF-PT-63	OSQ-BLSMF-PT-63
OSQ-BLSMF-PT-64	OSQ-BLSMF-PT-64
OSQ-BLSMF-PT-65	OSQ-BLSMF-PT-65
OSQ-BLSMF-PT-66	OSQ-BLSMF-PT-66
OSQ-BLSMF-PT-67	OSQ-BLSMF-PT-67
OSQ-BLSMF-PT-68	OSQ-BLSMF-PT-68
OSQ-BLSMF-PT-69	OSQ-BLSMF-PT-69
OSQ-BLSMF-PT-70	OSQ-BLSMF-PT-70
OSQ-BLSMF-PT-71	OSQ-BLSMF-PT-71
OSQ-BLSMF-PT-72	OSQ-BLSMF-PT-72
OSQ-BLSMF-PT-73	OSQ-BLSMF-PT-73
OSQ-BLSMF-PT-74	OSQ-BLSMF-PT-74
OSQ-BLSMF-PT-75	OSQ-BLSMF-PT-75
OSQ-BLSMF-PT-76	OSQ-BLSMF-PT-76
OSQ-BLSMF-PT-77	OSQ-BLSMF-PT-77
OSQ-BLSMF-PT-78	OSQ-BLSMF-PT-78
OSQ-BLSMF-PT-79	OSQ-BLSMF-PT-79
OSQ-BLSMF-PT-80	OSQ-BLSMF-PT-80
OSQ-BLSMF-PT-81	OSQ-BLSMF-PT-81
OSQ-BLSMF-PT-82	OSQ-BLSMF-PT-82
OSQ-BLSMF-PT-83	OSQ-BLSMF-PT-83
OSQ-BLSMF-PT-84	OSQ-BLSMF-PT-84
OSQ-BLSMF-PT-85	OSQ-BLSMF-PT-85
OSQ-BLSMF-PT-86	OSQ-BLSMF-PT-86
OSQ-BLSMF-PT-87	OSQ-BLSMF-PT-87
OSQ-BLSMF-PT-88	OSQ-BLSMF-PT-88
OSQ-BLSMF-PT-89	OSQ-BLSMF-PT-89
OSQ-BLSMF-PT-90	OSQ-BLSMF-PT-90
OSQ-BLSMF-PT-91	OSQ-BLSMF-PT-91
OSQ-BLSMF-PT-92	OSQ-BLSMF-PT-92
OSQ-BLSMF-PT-93	OSQ-BLSMF-PT-93
OSQ-BLSMF-PT-94	OSQ-BLSMF-PT-94
OSQ-BLSMF-PT-95	OSQ-BLSMF-PT-95
OSQ-BLSMF-PT-96	OSQ-BLSMF-PT-96
OSQ-BLSMF-PT-97	OSQ-BLSMF-PT-97
OSQ-BLSMF-PT-98	OSQ-BLSMF-PT-98
OSQ-BLSMF-PT-99	OSQ-BLSMF-PT-99
OSQ-BLSMF-PT-100	OSQ-BLSMF-PT-100



Ordering Information
Example: CAN-EDG-5M-DM-04-E-U-XX-350-40K

Luminaire	5M	DM	04	E	UL	XX	350	40K
Product	5M	DM	04	E	UL	XX	350	40K
Color	White	White	White	White	White	White	White	White
Options								

UL, DLC, CREE LIGHTING
www.cree.com/lighting
1 (800) 236-4800 F (202) 504-5415
Canada: www.cree.com/canada T (800) 473-1234 F (905) 890-7007

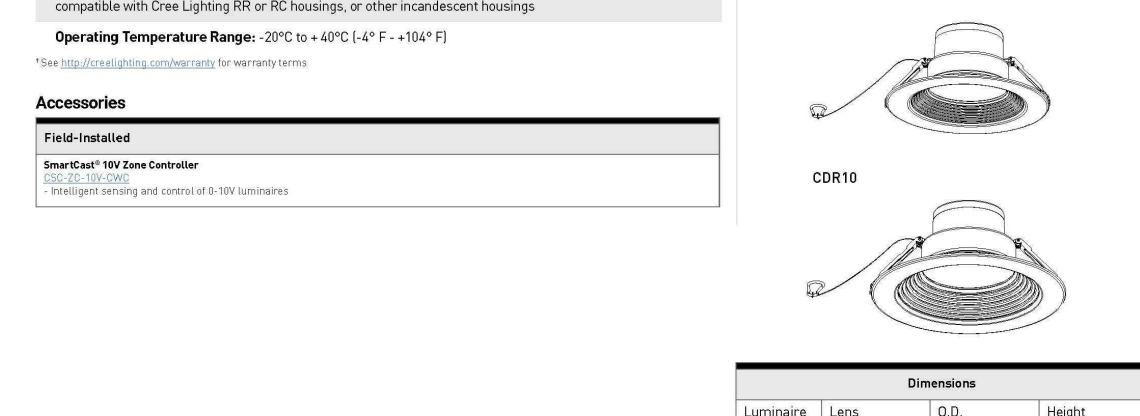
CDR Series

CFL Pin Replacement or New Construction Downlights - 6", 8", 9.5" / 10"

Product Description
The CDR LED downlight offers high quality customizable light with lumens and CCT selectable switches. Ideal for replacing compact fluorescent lamps and fixtures, the new CDR LED downlight is available in 6", 8", and 9.5" / 10" New construction and pin-replacement applications for residential and commercial lighting.
Applications: New construction or CFL pin-replacement upgrade for residential and commercial lighting.

Performance Summary

Initial Delivered Lumens: 700 to 3000 Lumens (Selectable Switch (Reference Table Below))
Input Power: 9W to 25W (Reference Table Below)
CRI: 90+
CCT: 2000K/5000K/6000K Selectable Switch
Limited Warranty: 5 years on luminaire, up to 5 years for SmartCast™ accessories
Lifetime: Designed to last 50,000 hours
Dimming: 0-10V Dimming to 1% compatible with SmartCast™ Technology and Lutron Via Wireless 0-10V interface
Rated for Dry, Damp, and Wet Locations
Easy to install in new construction or pin-replacement (LED housing only) with spring action housing clips. Not compatible with 0-10V dimming or 0-10V dimming, or other nonstandard housing.
Operating Temperature Range: 20°C to +40°C (4°F to +104°F)



Ordering Information
Example: CAN-CDR-6-DM-04-E-U-XX-350-40K

Luminaire	6"	DM	04	E	UL	XX	350	40K
Product	6"	DM	04	E	UL	XX	350	40K
Color	White	White	White	White	White	White	White	White
Options								

UL, DLC, SMARTCAST TECHNOLOGY, CREE LIGHTING
www.cree.com/lighting
1 (800) 236-4800 F (202) 504-5415
Canada: www.cree.com/canada T (800) 473-1234 F (905) 890-7007

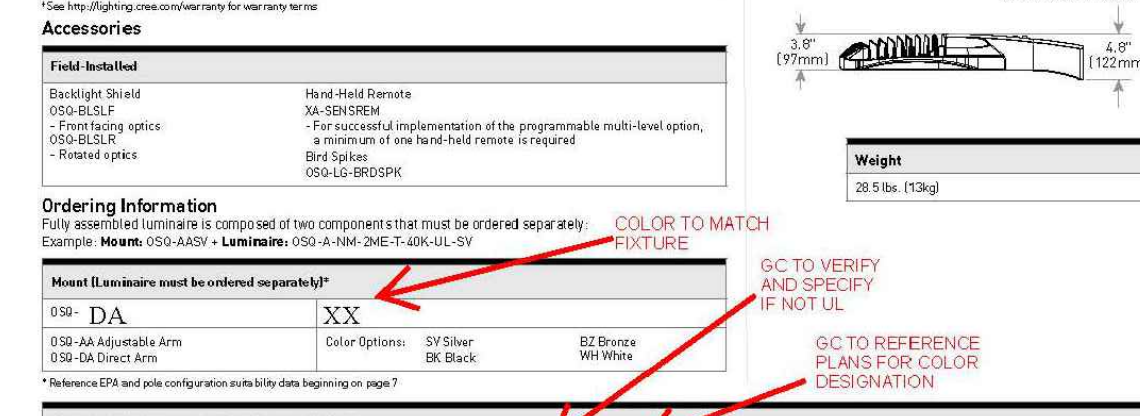
OSQ Series

OSQ™ LED Area/Flood Luminaire - Large

Product Description
The OSQ™ Area/Flood luminaire blends extreme optical control, advanced thermal management and modern, clean aesthetics. Built to last, the housing is rugged cast aluminum with an integral, weightlight LED driver compartment. Versatile mounting configurations offer simple installation. Its slim, low-profile design minimizes wind load requirements and blends seamlessly into the site planning, quality illumination. The 'B' input power designator is a suitable upgrade for HID applications up to 120 Watt, and the 'C' input power designator is a suitable upgrade for HID applications up to 400 Watt.
Applications: Parking lots, walkways, campuses, car dealerships, office complexes, and internal roadways.

Performance Summary

NanoQSP™ Precision Delivery Optic™ optics
Assembled in the U.S.A. of U.S. and imported parts
Initial Delivered Lumens: Up to 27,120
Efficiency: Up to 131 LPW
CRI: Minimum 70 CRI
CCT: 2000K (4-300K), 4000K (4-300K), 5700K (4-500K)
Limited Warranty: 10 years on luminaire/10 years on Colorfast DeltaGuard™ finish
See the Lighting.com website for warranty terms.



Ordering Information
Example: OSQ-DA-XX & OSQ-A-NM-SSH-U-40K-UL-XX

Luminaire	DA	NM	SSH	U	40K	UL	XX
Product	DA	NM	SSH	U	40K	UL	XX
Color	White	White	White	White	White	White	White
Options							

UL, DLC, CREE LIGHTING
www.cree.com/lighting
1 (800) 236-4800 F (202) 504-5415
Canada: www.cree.com/canada T (800) 473-1234 F (905) 890-7007

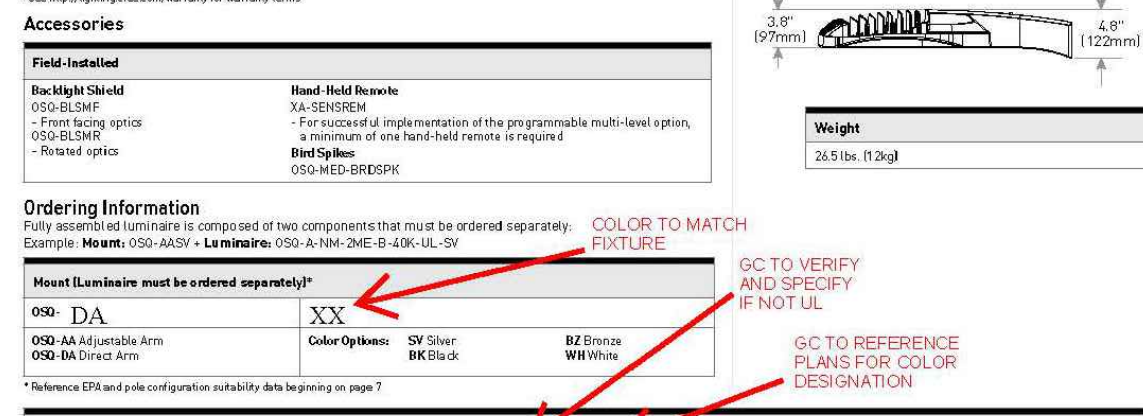
OSQ Series

OSQ™ LED Area/Flood Luminaire - Medium

Product Description
The OSQ™ Area/Flood luminaire blends extreme optical control, advanced thermal management and modern, clean aesthetics. Built to last, the housing is rugged cast aluminum with an integral, weightlight LED driver compartment. Versatile mounting configurations offer simple installation. Its slim, low-profile design minimizes wind load requirements and blends seamlessly into the site planning, quality illumination. The 'B' input power designator is a suitable upgrade for HID applications up to 120 Watt, and the 'C' input power designator is a suitable upgrade for HID applications up to 400 Watt.
Applications: Parking lots, walkways, campuses, car dealerships, office complexes, and internal roadways.

Performance Summary

NanoQSP™ Precision Delivery Optic™ optics
Assembled in the U.S.A. of U.S. and imported parts
Initial Delivered Lumens: Up to 17,251
Efficiency: Up to 131 LPW
CRI: Minimum 70 CRI
CCT: 2000K (4-300K), 4000K (4-300K), 5700K (4-500K)
Limited Warranty: 10 years on luminaire/10 years on Colorfast DeltaGuard™ finish
See the Lighting.com website for warranty terms.



Ordering Information
Example: OSQ-DA-XX & OSQ-A-NM-SSH-U-40K-UL-XX

Luminaire	DA	NM	SSH	U	40K	UL	XX
Product	DA	NM	SSH	U	40K	UL	XX
Color	White	White	White	White	White	White	White
Options							

UL, DLC, CREE LIGHTING
www.cree.com/lighting
1 (800) 236-4800 F (202) 504-5415
Canada: www.cree.com/canada T (800) 473-1234 F (905) 890-7007

BANK OF AMERICA
Lighting Upgrades
Montclair, New Jersey
NJ6-280
560 Valley Road
Montclair Township
Essex County, New Jersey

STONEFIELD
engineering & design
Rutherford, NJ • New York, NY • Boston, MA
Princeton, NJ • Tampa, FL • Detroit, MI
www.stonefielddesign.com
Headquarters: 92 Park Avenue, Rutherford, NJ 07070
Phone 201.340.4468 • Fax 201.340.4472
GMR
Facility Data and Design. Optimized.
P.O. Box 645, Rockwall, Texas 75087
www.gmr1.com
Office: (972) 771-6038 FAX: (972) 722-2762

Issue	Date & Issue Description	By	Check
01	03/09/2023 PER GMR V1	TP	JR

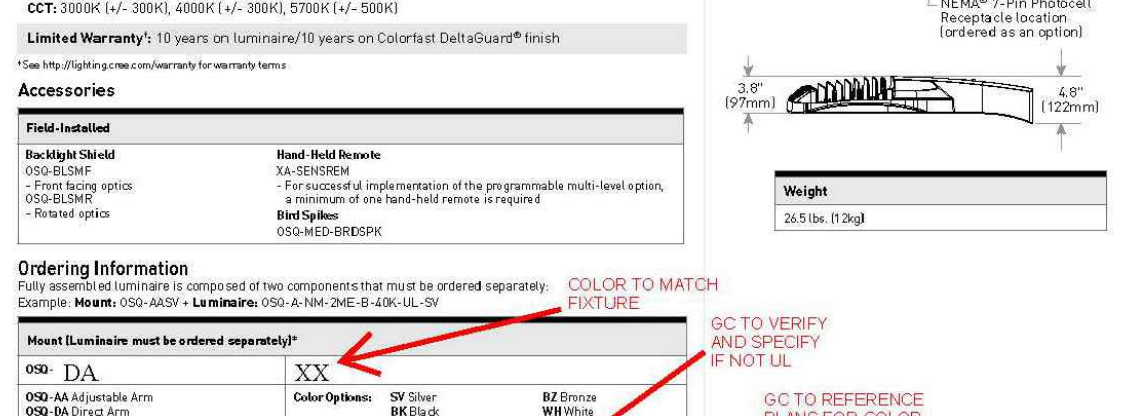
OSQ Series

OSQ™ LED Area/Flood Luminaire - Medium

Product Description
The OSQ™ Area/Flood luminaire blends extreme optical control, advanced thermal management and modern, clean aesthetics. Built to last, the housing is rugged cast aluminum with an integral, weightlight LED driver compartment. Versatile mounting configurations offer simple installation. Its slim, low-profile design minimizes wind load requirements and blends seamlessly into the site planning, quality illumination. The 'B' input power designator is a suitable upgrade for HID applications up to 120 Watt, and the 'C' input power designator is a suitable upgrade for HID applications up to 400 Watt.
Applications: Parking lots, walkways, campuses, car dealerships, office complexes, and internal roadways.

Performance Summary

NanoQSP™ Precision Delivery Optic™ optics
Assembled in the U.S.A. of U.S. and imported parts
Initial Delivered Lumens: Up to 17,251
Efficiency: Up to 131 LPW
CRI: Minimum 70 CRI
CCT: 2000K (4-300K), 4000K (4-300K), 5700K (4-500K)
Limited Warranty: 10 years on luminaire/10 years on Colorfast DeltaGuard™ finish
See the Lighting.com website for warranty terms.



Ordering Information
Example: OSQ-DA-XX & OSQ-A-NM-SSH-U-40K-UL-XX

Luminaire	DA	NM	SSH	U	40K	UL	XX
Product	DA	NM	SSH	U	40K	UL	XX
Color	White	White	White	White	White	White	White
Options							

UL, DLC, CREE LIGHTING
www.cree.com/lighting
1 (800) 236-4800 F (202) 504-5415
Canada: www.cree.com/canada T (800) 473-1234 F (905) 890-7007

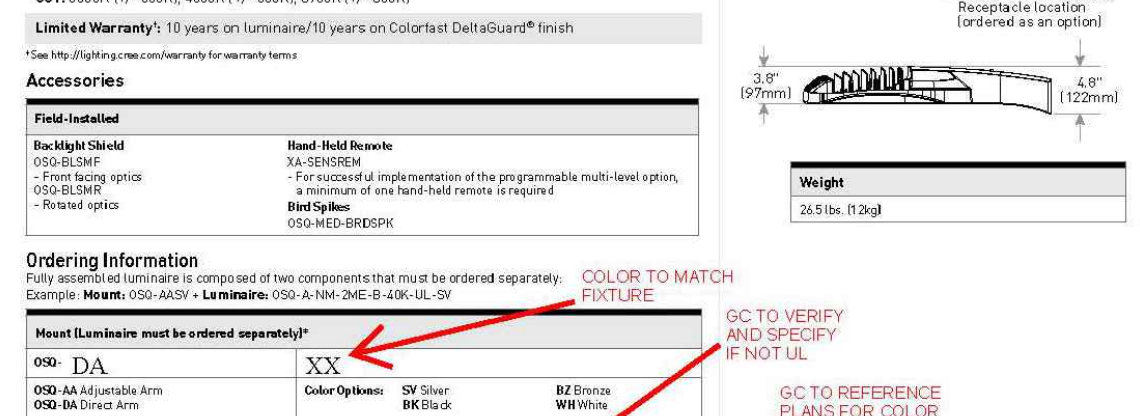
OSQ Series

OSQ™ LED Area/Flood Luminaire - Medium

Product Description
The OSQ™ Area/Flood luminaire blends extreme optical control, advanced thermal management and modern, clean aesthetics. Built to last, the housing is rugged cast aluminum with an integral, weightlight LED driver compartment. Versatile mounting configurations offer simple installation. Its slim, low-profile design minimizes wind load requirements and blends seamlessly into the site planning, quality illumination. The 'B' input power designator is a suitable upgrade for HID applications up to 120 Watt, and the 'C' input power designator is a suitable upgrade for HID applications up to 400 Watt.
Applications: Parking lots, walkways, campuses, car dealerships, office complexes, and internal roadways.

Performance Summary

NanoQSP™ Precision Delivery Optic™ optics
Assembled in the U.S.A. of U.S. and imported parts
Initial Delivered Lumens: Up to 17,251
Efficiency: Up to 131 LPW
CRI: Minimum 70 CRI
CCT: 2000K (4-300K), 4000K (4-300K), 5700K (4-500K)
Limited Warranty: 10 years on luminaire/10 years on Colorfast DeltaGuard™ finish
See the Lighting.com website for warranty terms.



Ordering Information
Example: OSQ-DA-XX & OSQ-A-NM-SSH-U-40K-UL-XX

Luminaire	DA	NM	SSH	U	40K	UL	XX
Product	DA	NM	SSH	U	40K	UL	XX
Color	White	White	White	White	White	White	White
Options							

UL, DLC, CREE LIGHTING
www.cree.com/lighting
1 (800) 236-4800 F (202) 504-5415
Canada: www.cree.com/canada T (800) 473-1234 F (905) 890-7007

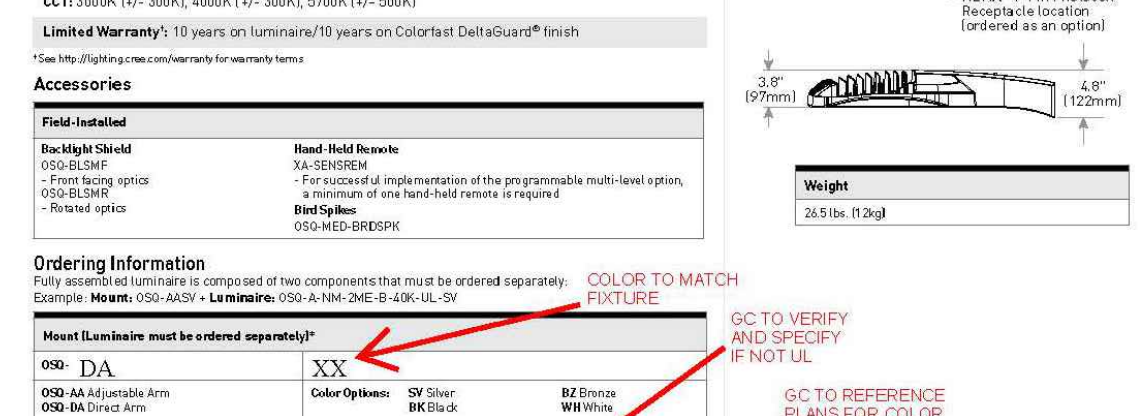
OSQ Series

OSQ™ LED Area/Flood Luminaire - Medium

Product Description
The OSQ™ Area/Flood luminaire blends extreme optical control, advanced thermal management and modern, clean aesthetics. Built to last, the housing is rugged cast aluminum with an integral, weightlight LED driver compartment. Versatile mounting configurations offer simple installation. Its slim, low-profile design minimizes wind load requirements and blends seamlessly into the site planning, quality illumination. The 'B' input power designator is a suitable upgrade for HID applications up to 120 Watt, and the 'C' input power designator is a suitable upgrade for HID applications up to 400 Watt.
Applications: Parking lots, walkways, campuses, car dealerships, office complexes, and internal roadways.

Performance Summary

NanoQSP™ Precision Delivery Optic™ optics
Assembled in the U.S.A. of U.S. and imported parts
Initial Delivered Lumens: Up to 17,251
Efficiency: Up to 131 LPW
CRI: Minimum 70 CRI
CCT: 2000K (4-300K), 4000K (4-300K), 5700K (4-500K)
Limited Warranty: 10 years on luminaire/10 years on Colorfast DeltaGuard™ finish
See the Lighting.com website for warranty terms.



Ordering Information
Example: OSQ-DA-XX & OSQ-A-NM-SSH-U-40K-UL-XX

Luminaire	DA	NM	SSH	U	40K	UL	XX
Product	DA	NM	SSH	U	40K	UL	XX
Color	White	White	White	White	White	White	White
Options							

UL, DLC, CREE LIGHTING
www.cree.com/lighting
1 (800) 236-4800 F (202) 504-5415
Canada: www.cree.com/canada T (800) 473-1234 F (905) 890-7007

Cree Edge™ Series

LED Security Wall Pack Luminaire

Product Description
The Cree Edge™ Series LED Security Wall Pack Luminaire provides a slim, low profile design. The luminaire and cap are made from rugged cast aluminum with integral, weightlight LED driver compartment and high performance heat sink specifically designed for LED applications. Housing is rugged aluminum. Includes a lightweight mounting bracket for installation over standard and non-standard poles. Secure to wall with four 3/16" (3mm) screws (not included). Conduct entry from top, bottom, sides and rear allowing room for light or on-site design and approved for easy through-roofing. Includes sealable diffuser guard.
Applications: General area and security lighting.

Performance Summary

Patented NanoQSP Product Technology
Assembled in the U.S.A. of U.S. and imported parts
CRI: Minimum 70 CRI
CCT: 4000K (4-300K), 5700K (4-500K) standard
Limited Warranty: 10 years on luminaire/10 years on Colorfast DeltaGuard™ finish
See the Lighting.com website for warranty terms.



Ordering Information
Example: CAN-EDG-3M-WM-02-E-U-XX-350-40K

Luminaire	3M	WM	02	E	UL	XX	350	40K
Product	3M	WM	02	E	UL	XX	350	40K
Color	White	White	White	White	White	White	White	White
Options								

